

# MANGROVE

CREEK BEACH



EMAAR



DUBAI CREEK HARBOUR

# THE WORLD OF TOMORROW





# DUBAI CREEK HARBOUR

The heart of our bold new vision for Dubai.  
The eight square kilometre waterfront  
destination is bound to push the frontiers of  
architecture, design and the quality of life.  
Residents of Dubai Creek Harbour enjoy  
proximity to:



Downtown  
Dubai



Dubai Intl.  
Airport



Wildlife  
Sanctuary



World-class  
Hotels & Resorts







## CREEK BEACH



Creek Beach is Dubai's first-of-its-kind urban beach in the heart of Dubai Creek Harbour. Located along the historic Dubai Creek.

Creek Beach is conceived to offer you the ultimate family-friendly retreat. From 700 metres of pristine white sands to the infinity pool and spectacular sunset views, this is paradise reborn.

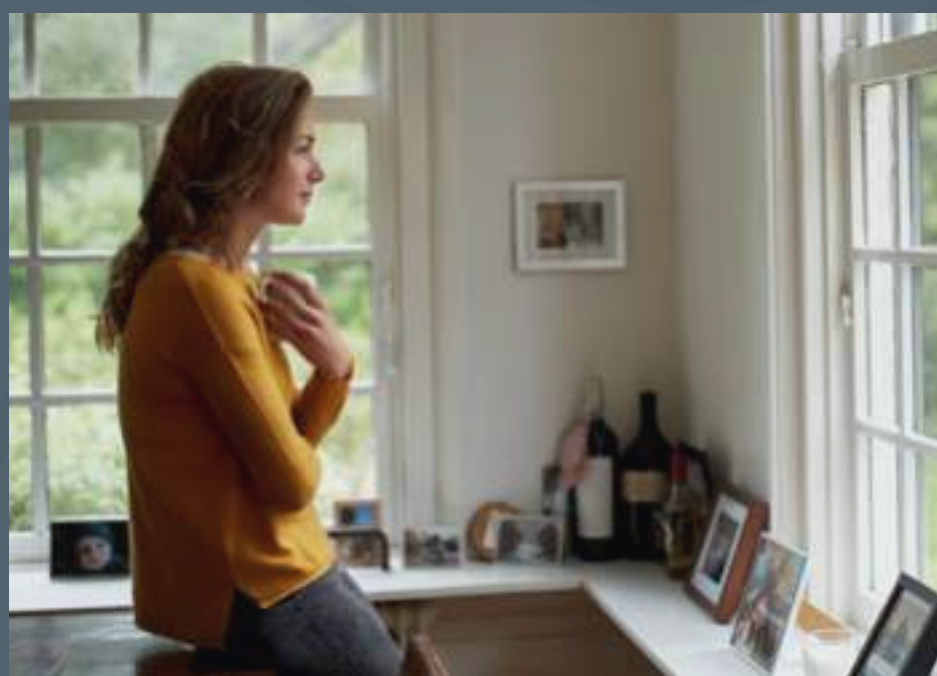


# WELCOME TO MANGROVE





# ELEVATING THE DEFINITION OF CONTEMPORARY LIVING

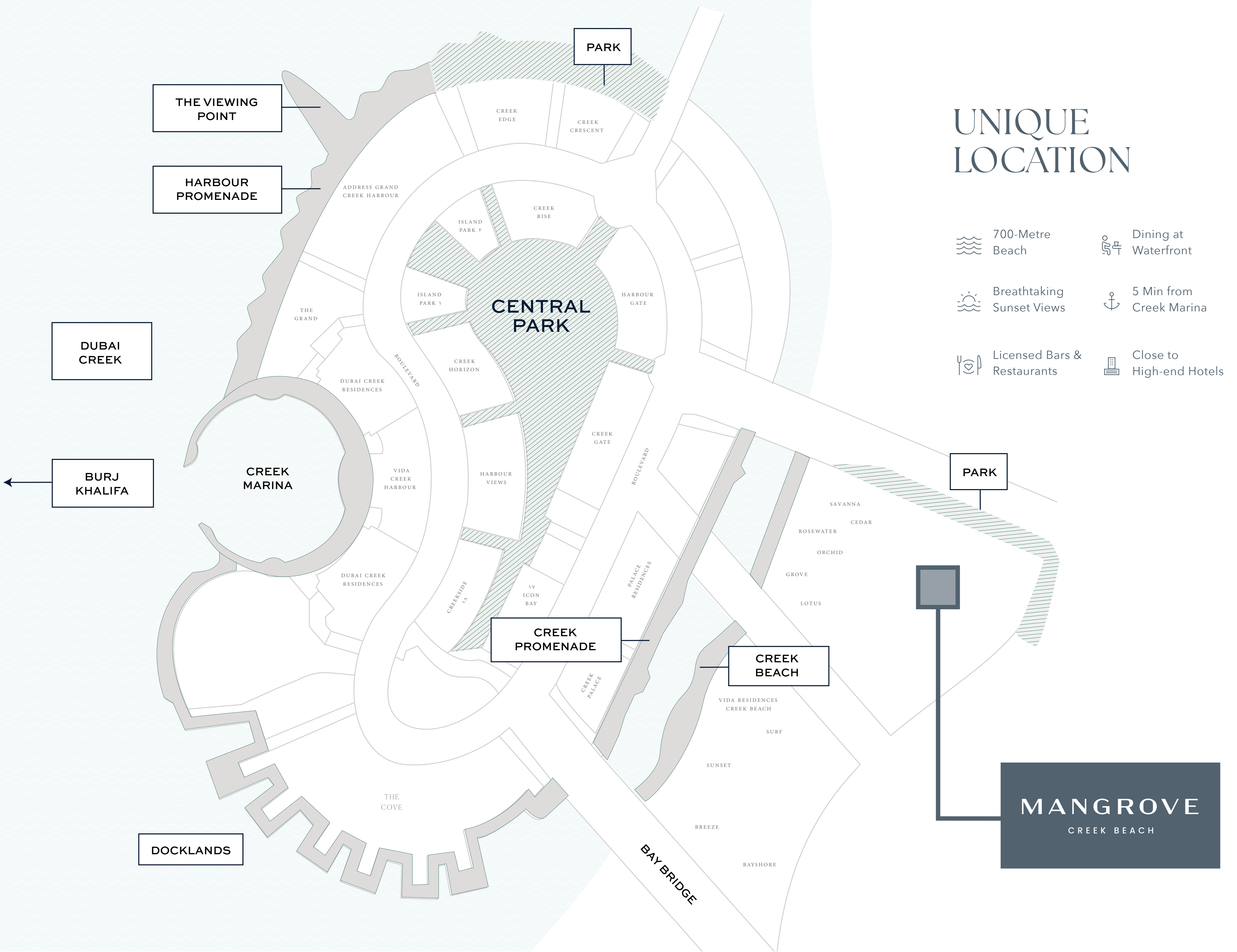


Mangrove is a complex of one, two, and three-bedroom apartments that sits next to a beautiful park.







Elegantly designed buildings in a prime location near top-notch services and a well-connected road system make it easy to experience all that Dubai has to offer.







# UNIQUE LOCATION

-  700-Metre Beach
-  Dining at Waterfront
-  Breathtaking Sunset Views
-  5 Min from Creek Marina
-  Licensed Bars & Restaurants
-  Close to High-end Hotels

**MANGROVE**  
CREEK BEACH





## MODERN LIFE AT ITS BEST

Mangrove is a fashionable residential community with two towers rising around a lively central plaza. Offering apartments with one to three bedrooms, the stylish complex features private balconies and terraces with views of the park, creating a resort-like atmosphere.





INSPIRING  
A HEIGHTENED  
SENSE OF LIVING

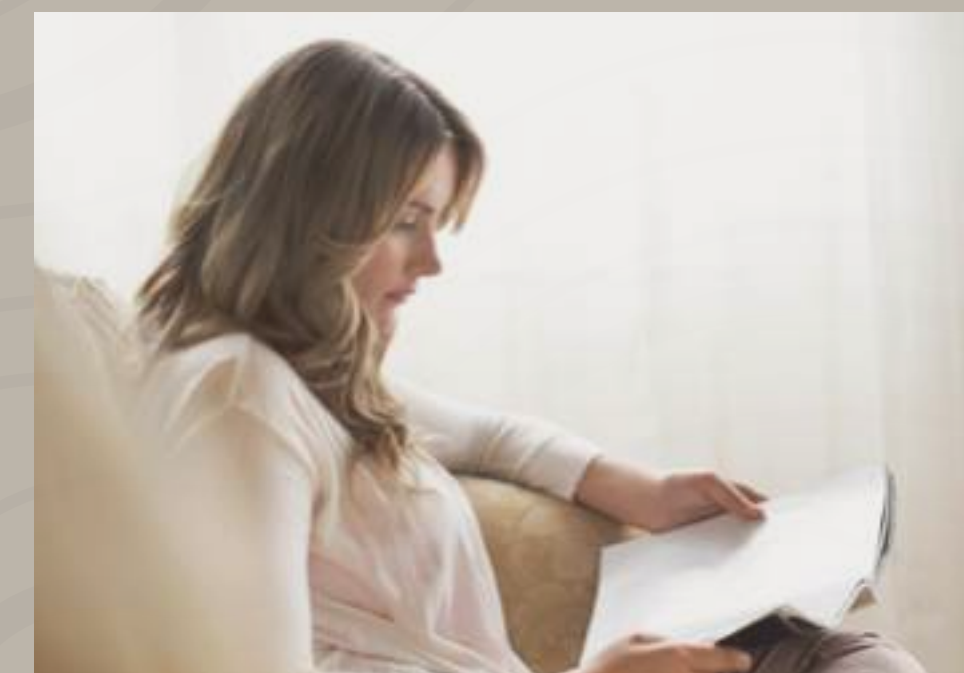








## DISTINCTIVE STYLE



Careful consideration was given to every aspect of each Mangrove home's design in order to maximise living space and natural light and create an ambiance of sleek, modern elegance.



# UNDERSTATED LUXURY



Mangrove's distinctive personality is largely shaped by a minimalist aesthetic that echoes the air of refined sophistication defining the modern home. The apartments, ranging from one- to three-bedroom units, overlook a beautifully landscaped courtyard.









AN ACTIVE & FIT  
WAY OF LIFE







## LEISURE, FUN & RELAXATION

With many unique spots to recharge, escape, relax, and socialise, life in Mangrove is truly one of a kind. Two town squares, a town centre with shops and restaurants, a fitness centre on a private patio, an outdoor play area, a community room, a barbecue area, and a lush lawn are all that you will need to enjoy an active lifestyle.



Town  
Centre



Barbecue  
Facilities



Fully Equipped  
Gym



Outdoor  
Play Area



TODDLERS ONLY PLAY AREA  
FOR THE LITTLE ONES





# FULLY EQUIPPED GYM





SHARING A MOVIE IN THE  
OUTDOOR CINEMA SPACE







## CREEK MARINA

With a wide variety of retail, dining, and recreational options, Creek Marina never slows down. Landscaped pedestrian walkways offer stunning views of Downtown Dubai at dusk, while world-class art pieces add another layer to the trendsetting lifestyle.



Food Trucks



Art Installations



Yacht Club Marina with 81 Berths



Sculptural Viewing Deck



Vida Creek Harbour



Address Hotel



# THE VIEWING POINT



Take in some of the city's most spectacular sights at The Viewing Point at Dubai Creek Harbour. The 11.65m tall and 70-metre long structure spans out over Dubai Creek, with a 26m cantilever projecting out over the water. The walkway offers unobstructed views of the Dubai Creek and surrounding areas, and unique vistas of Downtown Dubai's incredible skyline.







# CENTRAL PARK

The heart of island living, Dubai Creek Harbour Central Park offers residents a tranquil refuge to unwind, first-class amenities to enjoy, and wide-open spaces to discover. With a total area of six football fields, Dubai's Central Park is one of the largest parks in the emirate and offers a variety of activities for the whole family.

 Kids' Play Area

 Skating Areas

 Lawn Amphitheatre

 Fitness Plaza

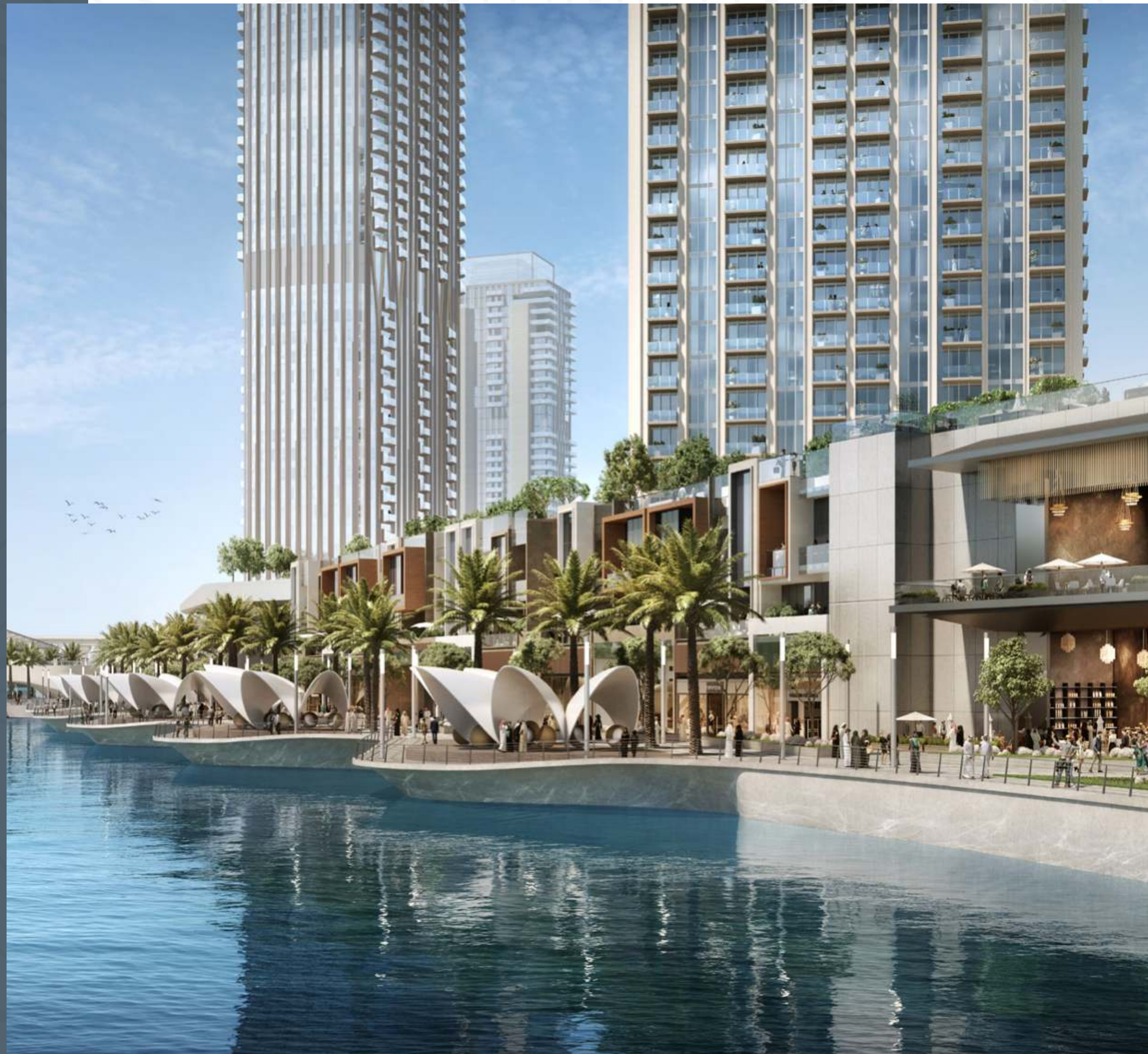
 Dog Park



# HARBOUR PROMENADE



Explore a bustling promenade, an impressive skyline as you sit back and relax on the Harbour Promenade. Set sail across Dubai Creek's glistening waters and take in the city's cityscape from a unique vantage point. Enjoy a wonderful meal while taking in the breathtaking views between shopping and boating.







## WORLD-CLASS HOSPITALITY AT YOUR FINGERTIPS

With Address Grand Creek Harbour and Vida Creek Harbour nearby, you can unwind in the comfort of fine dining and private wellness facilities located mere minutes from your residence.



Wellness



Fine Dining



Events



Viewing  
Deck



Infinity Pool



Fully Equipped  
Gym



# EMAAR

A leader in the global real estate market, EMAAR has grown over the years to become the largest real estate developer outside of China. You will be investing with one of the best-regarded brands in the world\*.

70.09 Bn AED

Market Cap - FY 2023

26.7 Bn AED

Revenue - FY 2023

108,000

Residential Units Delivered

12+

Global Market Presence

11.6 Bn AED

Net Profit - FY 2023

25,500+

Residential Units  
Under Development

\*As on 31 December 2023







# TANAMI

PROPERTIES

## CONTACT US

+971 4 248 3400 | +971 55 162 3236

Email Us

info@tanamiproperties.ae

For More Info...

[www.tanamiproperties.com/Projects/Mangrove-at-Creek-Beach](http://www.tanamiproperties.com/Projects/Mangrove-at-Creek-Beach)



## ADDRESS

Office 3405, Marina Plaza,  
Al Marsa Street, Dubai Marina, UAE